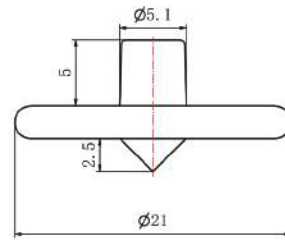


The Plastic Locator for Sign Standoffs

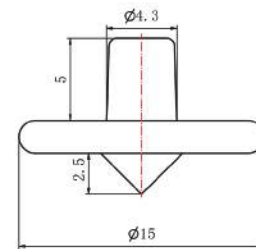
PATENTED



Finish : WT



SL-2110 (5mm)



SL-1510 (4.2mm)

Item No.	SL-1510(4.2mm)	SL-2110(5mm)
Description	It's suitable for positioning the standoffs with bottom hole diameter 4.2mm	It's suitable for positioning the standoffs with bottom hole diameter 5mm
Aluminum	CA-1313/CA-1319/CA-1325/CA-1520/CA-1525/CA-FH1321	CA-1919/CA-1925/CA-2519/CA-2525/SA-1616/SA-1625/SA-1640/SA-1925/SA-2525/SA-2540/SA-3225/L-2525/CA-FHP4-1626/CA-FH1926
Brass	CN-1313/CN-1319/CN-1325/CN-1340	CH-1623/CH-2327/CN-1919/CN-1925/CN-2519/CN-2525/ C-2525/C-1619A
Stainless Steel	SS-1313/SS-1319/SS-1320/SS-1820	SS-1925/SS-2525
Acrylic	AS-1313/AS-1319	AS-1919/AS-1925/AS-2525

